

GE Z-Wave Plug-In Smart Dimmer



Specifications

Power: 120VAC, 60Hz **Signal Frequency:** 908.4/916

Maximum load for the Z-Wave controlled outlets:

300 W Incandescent / 100W dimmable CFL/LED

Z-Wave controlled outlet is fused @ 5A. This fuse is not user serviceable

Range: Up to 150 feet from controller or closest Z-Wave device

Operating Temperature: 32-104° F (0-40° C)

Warranty: 2-year limited product warranty

For Indoor Use Only

Design Features

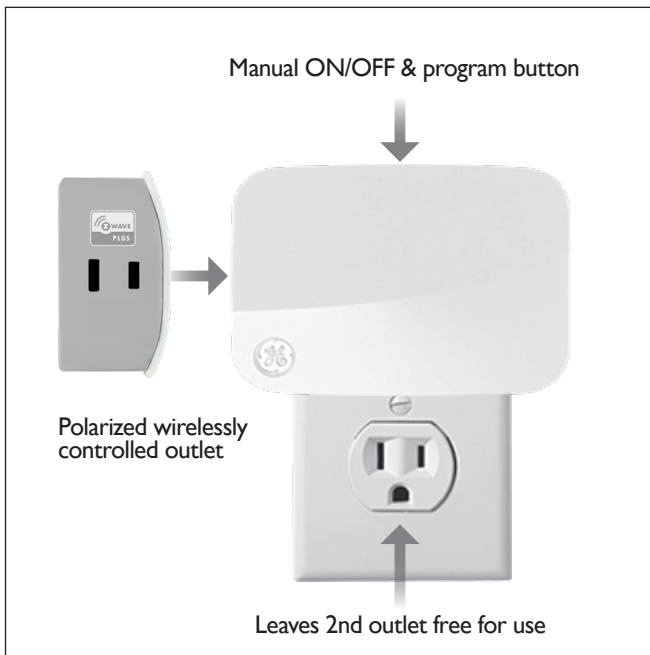
- Remotely monitor with any mobile device*
- Can be Included in multiple Groups and Scenes
- One Z-wave controlled AC outlet for dimmable LED, CFL and incandescent lights
- Remote ON/OFF and Brightness control via the Z-Wave controller
- Manual ON/OFF and Brightness control with the top push-button
- Space efficient design
- Does not block the lower outlet when plugged in to the upper outlet of a duplex wall receptacle. (This assumes that the duplex receptacle is mounted with the ground pin down.)
- Plugs and cords for connected devices route to the side allowing close placement of furniture
- Utilizes the Z-Wave Firmware Update Meta Data command class for standardized firmware updates Over the Air
- Z-Wave Plus certified
- Two Toned Coloring
- Visit <http://www.ezwave.com/hubs/> for hub compatibility
- Trilingual Instruction manual – (English, French, Spanish)

Z-Wave Plus Features

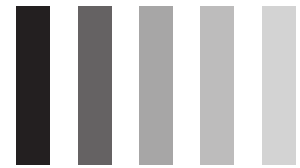
- Works with Z-Wave Classic and Z-Wave Plus Products
- 50% more wireless range
- 250% faster processor
- 400% more memory
- 50% more energy efficient
- Supports wireless upgrades to future-proof your home

* Requires Z-Wave hub or controller, functions may vary depending on brand.





**Save Energy,
Save Money**



**Full Range
Dimmability**

Adjust brightness level from 0-100%.

Dimming lights cuts energy cost and extends bulb life.

Dims in 1% increments.

Device Configuration

Adding your device to a Z-Wave network

Once the hub is ready to add your smart dimmer, press and release the top button on the smart dimmer to add it in the network.

To remove and reset the device

Once the controller is ready to remove your device, press and release the top button on the smart dimmer to remove it from the network.

To return to factory defaults

If plugged in, unplug from the receptacle. Press and hold the top button for at least 3 seconds while you plug the dimmer into the receptacle.

Certifications & Compliances



Compliances, specifications and availability are subject to change without notice

Distributed by Jasco Products Company LLC
10 E. Memorial Rd., Oklahoma City, OK

©Jasco 2018

Related Products - GE Z-Wave Plug-In Smart Controls



28169
Plug-In Smart
Switch



14280
Plug-In Dual
Outlet Smart
Dimmer



28177
Plug-In Dual
Outlet Smart
Switch with
USB Charging



28175
Plug-In Dual
Outlet Smart
Dimmer with
USB Charging



14284
Plug-In Outdoor
Smart Switch