

# GE Z-Wave Plug-In Dual Outlet Smart Dimmer with USB Charging



## Specifications

**Power:** 120VAC, 60Hz **Signal Frequency:** 908.4/916

**Maximum load (Total):** 120VAC, 300W (2.5A) Tungsten, 300W Incandescent, 100W Dimmable CFL/LED

**USB Output:** 5.2VDC MAX 2.4A each USB. MAX total 3.4A both USB

**Range:** Up to 150 feet from controller or closest Z-Wave device

**Operating Temperature:** 32-104° F (0-40° C)

**Warranty:** 2-year limited product warranty

**For Indoor Use Only**

## Design Features

- Remotely monitor with any mobile device\*
- Can be Included in multiple Groups and Scenes
- Remote Control Turn ON/OFF and control the brightness level of the connected lighting manually or via smartphone or tablet
- Multi-Purpose 2 USB Ultra Charge\*\* ports (3.4A) are available on each side of the device
- Dual outlets Wirelessly control both outlets simultaneously or independently†
- Home Automation Can be set up to control scenes or used in a scheduled event
- OTA (Over-the-Air) Updateable Utilizes the Z-Wave Firmware Update Meta Data command class for standardized wireless firmware updates
- Visit <http://www.ezwave.com/hubs/> for hub compatibility
- Trilingual Instruction manual – (English, French, Spanish)

## Z-Wave Plus Features

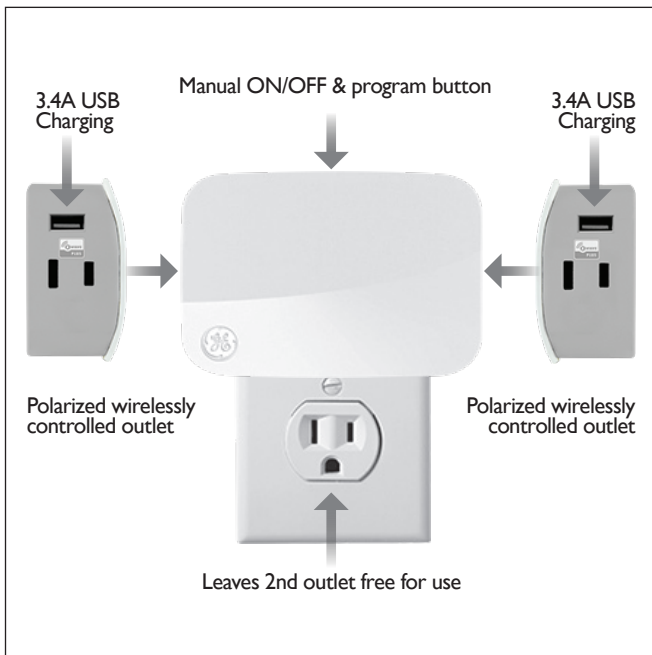
- Works with Z-Wave Classic and Z-Wave Plus Products
- 50% more wireless range
- 250% faster processor
- 400% more memory
- 50% more energy efficient
- Supports wireless upgrades to future-proof your home

\* Requires Z-Wave hub or controller, functions may vary depending on brand.

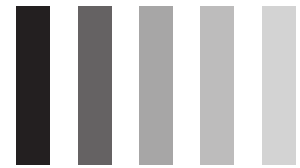
\*\* Ultra Charge safely charges up to 40% faster than traditional 5.0V USB chargers. Results will vary by device & connected cable.

† Independent control requires hub with multi-channel support





**Save Energy,  
Save Money**



**Full Range  
Dimmability**

## Two Outlet Smart Dimmer plus Two USB

Wirelessly control both outlets independently†

## Adjust brightness level from 0-100%.

Dimming lights cuts energy cost and extends bulb life.

Dims in 1% increments.

## Device Configuration

### Adding your device to a Z-Wave network

Once the hub is ready to add your smart dimmer, press and release the top button on the smart dimmer to add it in the network.

### To remove and reset the device

Once the controller is ready to remove your device, press and release the top button on the smart dimmer to remove it from the network.

### To return to factory defaults

If plugged in, unplug from the receptacle. Press and hold the top button for at least 3 seconds while you plug the dimmer into the receptacle.

## Certifications & Compliances



Compliances, specifications and availability are subject to change without notice

Distributed by Jasco Products Company LLC  
10 E. Memorial Rd., Oklahoma City, OK

©Jasco 2018

## Related Products - GE Z-Wave Plug-In Smart Controls



**28169**  
Plug-In Smart  
Switch



**28167**  
Plug-In Smart  
Dimmer



**14282**  
Plug-In Dual  
Outlet Smart  
Switch



**14280**  
Plug-In Dual  
Outlet Smart  
Dimmer



**28177**  
Plug-In Dual  
Outlet Smart  
Switch with  
USB Charging



**14284**  
Plug-In Outdoor  
Smart Switch